

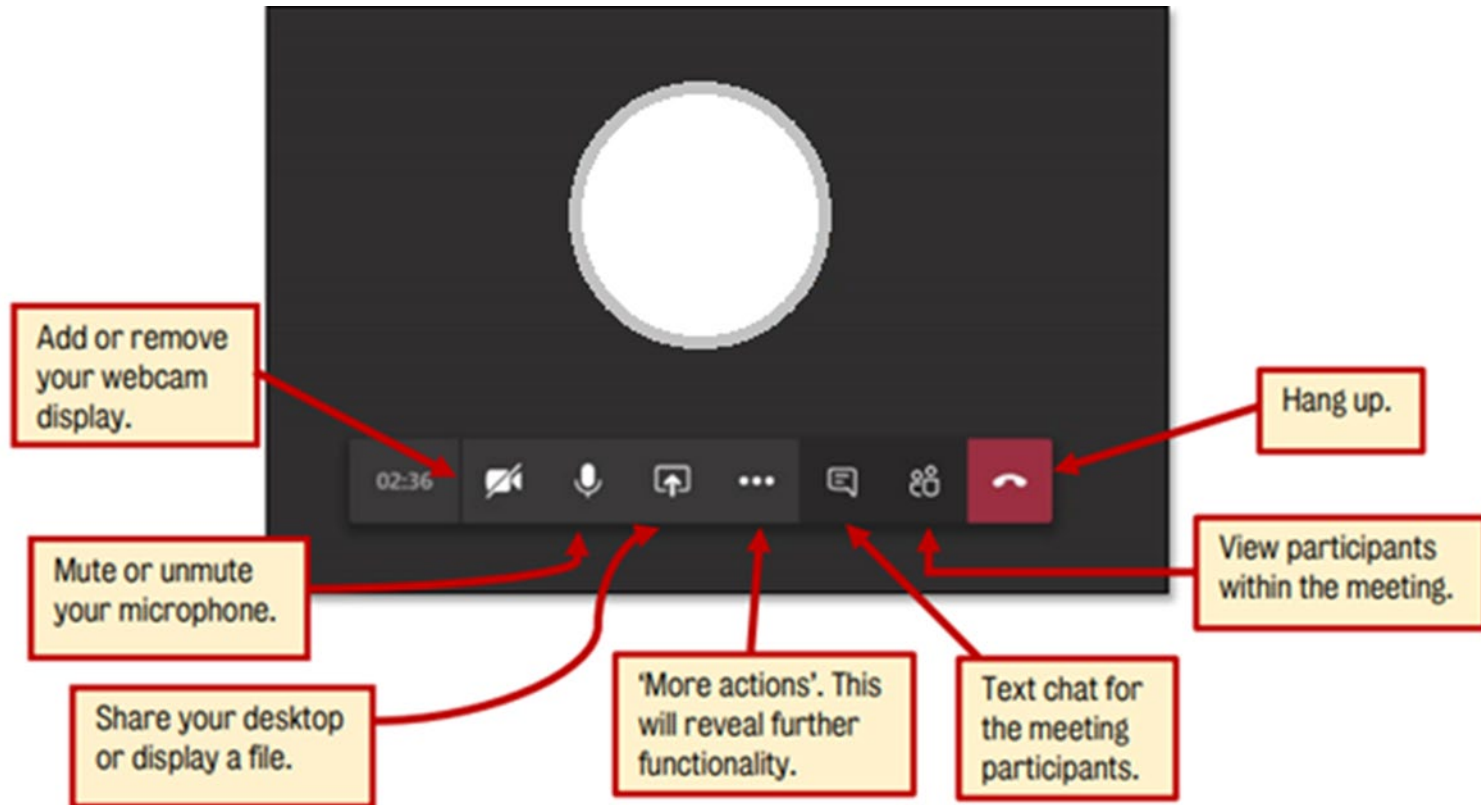
**Primary School Admission
Arrangements
September 2022**

**Stanford Infant School
5 November 2020**



**Brighton & Hove
City Council**

Welcome



Why are we here?

- To explain why we are proposing to change the maximum number of children who attend the school from September 2022.
- To explain the expected increase in surplus places across the city in the coming years.
- To explain the process the council will follow before making a decision.
- To give you an opportunity to ask questions about what we are proposing.
- To give you an opportunity to report your views as part of the consultation process.
- To encourage you to make your own submission to the consultation.

Why are we doing it now?

- As a council, we are required by Government to plan the number of places we have at schools in the city. Part of these rules set out a timetable we have to follow.
- The national School Admissions Code 2014 states that consultation must be for a minimum of six weeks and must take place between 1 October and 31 January of the school year before those arrangements are to apply.
- The admission arrangements must be determined by 28 February 2021.

Proposed change for September 2022

- Currently Stanford Infant School can admit up to a maximum of 90 pupils into Reception each year.
- From September 2022 we are proposing to reduce that to a maximum of 60 pupils each year.
- If the proposal goes through, the maximum number of children who will be in the school will fall from 270 currently to 180.
- This will mean that the school will have fewer classes and fewer teachers.
- School funding is mainly based on numbers of pupils. The amount of money the school will receive each year will be less, but there will be fewer children to teach.
- This change may not be permanent although the language we are required to use says so. Should there be more applications in future we can increase the number of spaces available.

What is happening across the city?

- In September 2022 the council predicts there will be 2293 children needing a school place and 527 unfilled places. 19% spare capacity.
- In September 2023 the council predicts there will be 2191 children needing a school place and 629 unfilled places. 22% spare capacity.
- In the current Year 6 we have approximately 2800 children. Starting school in September 2020 is approximately 2500 children.

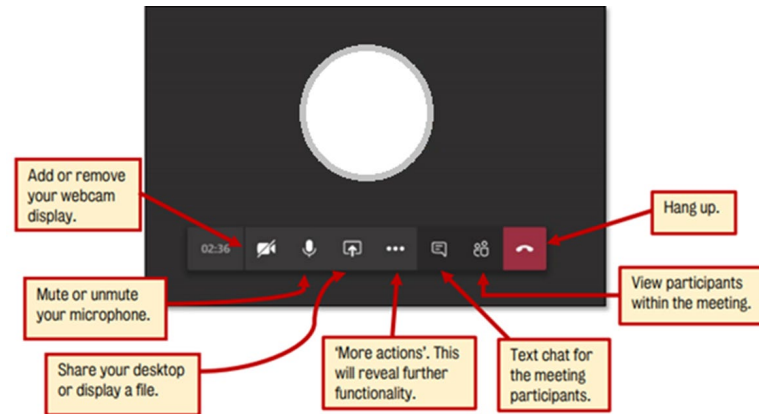
What is happening across the city?

- The effect of new housing developments in the city is small compared to the impact of changing birth rates.
- 11,122 units of accommodation are to be delivered by 2030. Based on previous experience this would generate an additional 1,023 primary age pupils by 2030.
- If the pupils were generated evenly over the next 10 years we would only expect an additional nine primary age pupils per year group, each year, across the whole city.
- If these developments mean there are more primary age places, the council can review places again.

Questions and comments

Are there any questions on the city wide problem?

Please use the 'hand up' function and allow for responses to be given without interruption.



Post a question or comment on the message bar to the side.

What is the problem with having unfilled places in schools?

- There are legal requirements that limit infant classes to 30 pupils. So if Stanford Infant School has 90 places but only has (for example) 78 pupils, they have to legally operate 3 classes and employ 3 teachers – but they might not receive enough money to be able to pay for all the teachers.
- If the school has 60 places, they can fill these according to the city's admissions priorities and not have to employ a fourth teacher.

Why this school?

- The council is committed to keeping schools open as they often form the heart of a community.
- It is important that parents can access a local school and are not forced to travel long distances to school.
- Maintaining schools within walking distance for most families helps to meet the council's priority of becoming a carbon neutral city by 2030.
- When a school is closed the buildings and site are normally lost to other uses. It is very costly to the public finances to create new school places from scratch.
- We have too many surplus places across the city and we have to manage places across all schools.

Why this school?

- We predict that we will have 527 spare places in 2022 and 629 spare places in 2023.
- All of the 8 primary school planning areas in the city show spare places.
- 6 of those planning areas show spare capacity greater than 10% in both 2022 and 2023, including 'central city' which includes Stanford Infant School.

Why this school?

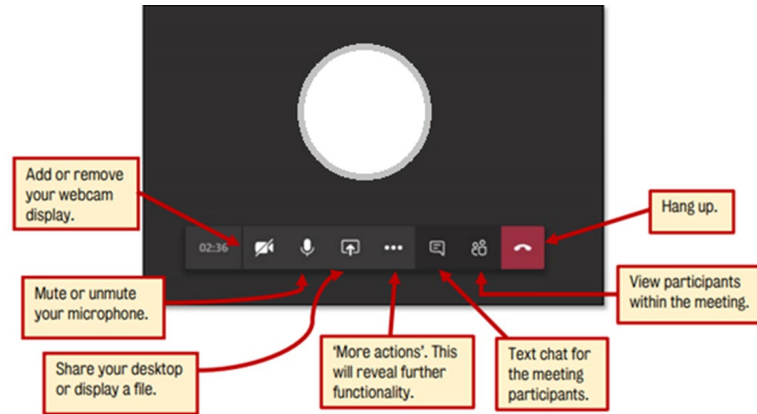
- Stanford Infant School is in the central city planning area.
- In this planning area there are 14 schools and 630 places in each year group.
- If we do not make any changes, there will be 162 spare places in September 2022.
- In the BN1 5 postcode there are estimated to be 100 children for 150 places in 2 schools: Stanford Infant and Westdene Primary.

Why this school?

- In October 2020 there were:
 - 75 in Year R
- In January 2020 there were:
 - 89 in Year R
 - 89 in Year 1
 - 86 in Year 2

Questions and comments

Are there any questions relating to Stanford Infant School?
Please use the 'hand up' function and allow for responses to be given without interruption.



Post a question or comment on the message bar to the side.

What happens next?

- Consultation period – 5 October – 27 November
- Consultation documents – <https://www.brighton-hove.gov.uk/schooladmissionsconsultation>
- Recommendations will be presented to the Children, Young People & Skills committee on 11 January 2021.
- Schools can object to the national Schools Adjudicator if the number of places set for them is lower than they would wish. There is a strong presumption in favour of increasing rather than decreasing a school's size which the Schools Adjudicator must take into account when considering any objection.

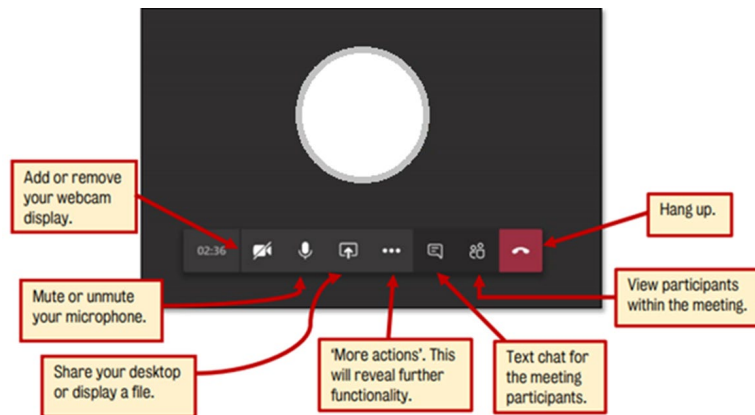
Give us your views?

- Do you agree that the council should reduce the overall number of spare school spaces in the city?
- Do you agree that the council should try to avoid closing a school wherever possible?
- Do you agree or disagree with the proposal to reduce the places at Stanford Infant School?
- Any comments or reasons for your answers?
- Do you wish to propose that the places at another school (or schools) is reduced? If so, which school or schools should have their number of places lowered?
- Any comments or reasons for your answer?

Questions and comments

Are there any questions or comments?

Please use the 'hand up' function and allow for responses to be given without interruption.



Post a question or comment on the message bar to the side.

Next steps

- Consultation period – 5 October – 27 November
- Consultation documents – <https://www.brighton-hove.gov.uk/schools-and-learning/apply-school/about-schools-admission-consultation>
- Response form – <https://consultations.brighton-hove.gov.uk/children-and-learning/school-admissions-2022-23/>
- Recommendations will be presented to the Children, Young People & Skills committee on 11 January 2021.
- If you require a hard copy please email the council's school admissions team at schooladmissions@brighton-hove.gov.uk or call 01273 293653.
- If you need us to take down your response to the consultation because you cannot complete it yourself, please call 01273 293653 and leave a message and we will call you back and arrange to take down your response.

